



EXAMINATIONS COUNCIL OF ESWATINI  
Eswatini General Certificate of Secondary Education

CANDIDATE  
NAME

--

CENTRE  
NUMBER

--	--	--	--	--

CANDIDATE  
NUMBER

--	--	--	--

**FASHION AND FABRICS**

**6904/01**

Paper 1 Theory

**October/November 2024**

**2 hours**

Candidates answer on the Question Paper.

No Additional Materials are required.

**READ THESE INSTRUCTIONS FIRST**

Write your name, centre number and candidate number on all the work you hand in.

Write in dark blue or black pen in the spaces provided on the question paper.

You may use a soft pencil for any diagrams or rough work.

Do **not** use staples, paper clips, highlighters, glue or correction fluid.

**Section A**

Answer **all** questions in the spaces provided on the Question Paper.

You are advised to spend no longer than 45 minutes on Section A.

**Section B**

Answer **two** questions only in the spaces provided on the Question Paper.

**Section C**

Answer **either** question **5** or **6** on the lined pages at the end of the Question Paper.

The number of marks is given in brackets [ ] at the end of each question or part question.

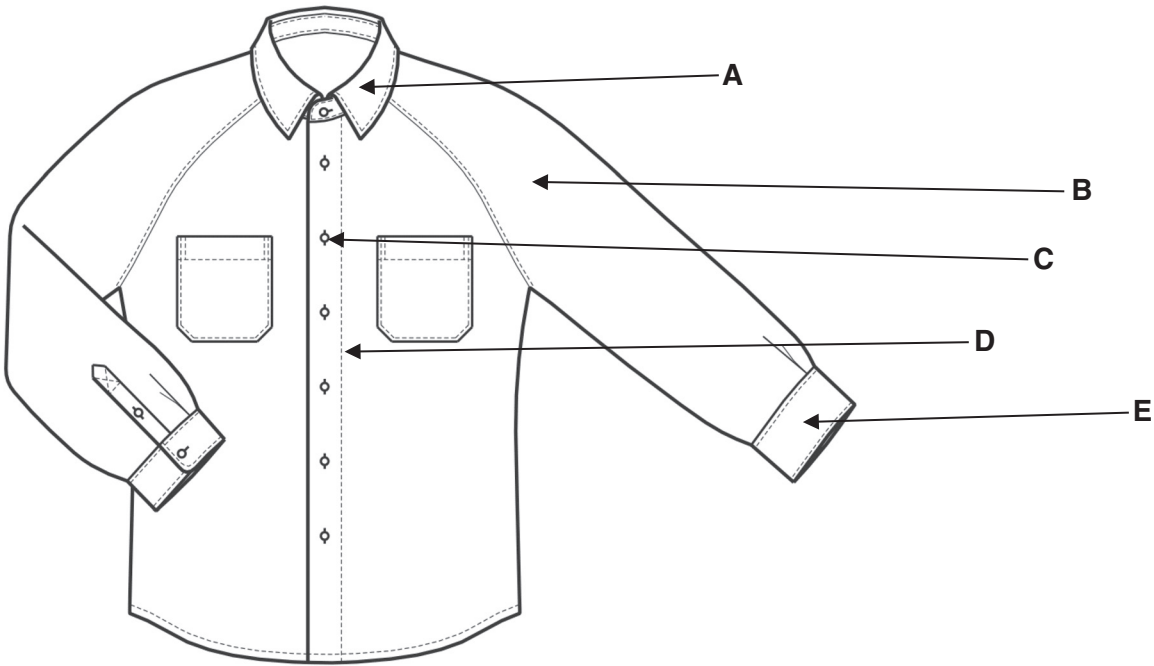
For Examiner's Use		
	Question	Marks
Section A		
Section B		
Section C		
Total		

This document consists of **16** printed pages.

**SECTION A**

Answer **all** questions in this section in the space provided

1 (a) Identify the style features indicated on the shirt in **Fig. 1** below.



**Fig. 1**

- A ..... [5]
- B ..... [5]
- C ..... [5]
- D ..... [5]
- E ..... [5]

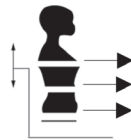
(b) State any **two** body measurements needed to make the shirt above.

- ..... [2]
- ..... [2]

(c) Study the back of the pattern envelope and fill in the details of fabrics and notions needed to make the shirt on page 2 **view 1, size 10.**

**MISSES' RAGLAN SLEEVE SHIRT:** Loose-fitting, shirt has a fly front with concealed button closing. V. 1 and 2 has a collar, collar band, long sleeves pleated to buttoned cuffs and shirt tail hem. V. 1 has a buckled tab and welt pocket with a flap. V. 3 has a band, patch pocket and elbow length sleeves.

**Fabrics-**Cotton and cotton types. Oxford cloth. Chambray. Linen and linen types: handkerchief linen. Crisp silk and silk types: shantung. Extra fabric is needed to match plaids and stripes. One-way design fabrics: extra fabric may be needed . . . use nap yardage and nap layouts to match. It is not suitable for obvious diagonal fabrics.



30½	31½	32½	34	36	38	Ins.
23	24	25	26½	28	30	"
32½	33½	34½	36	38	40	"
15½	15¾	16	16¼	16½	16¾	"

<b>Sizes U.S.A ONLY</b>	6	8	10	12	14	16	
Sizes			10	12	14	16	
<b>View 1 Shirt</b>	44" / 45"*	2¼	2¼	2½	2½	2½	Yds
	58" / 60"*	2	2	2	2	2¼	"

Interfacing – 5/8 yd. of 22" to 36" woven non-woven

<b>View 2 Shirt-</b> Even or uneven lengthwise stripped or plain fabric							
44" / 45"*	2¼	2¼	2½	2½	2½	2½	Yds
58" / 60"*	2	2	2	2	2¼	2¼	"

Interfacing - 5/8 yd. of 22" to 36" woven non-woven

<b>View 3 Shirt</b>	44" / 45"*	1¼	1¾	1¾	2	2	2	Yds
	58" / 60"*	1½	1½	1½	1	1	1	"

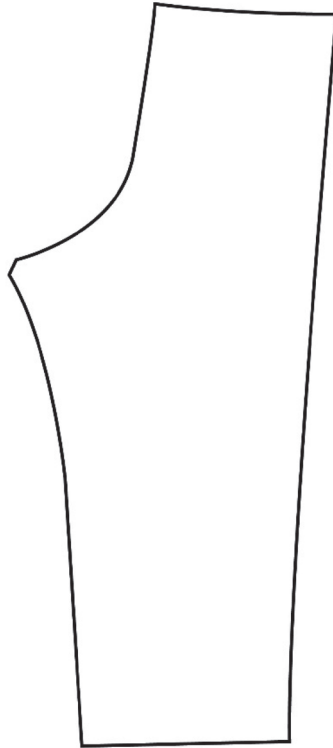
Interfacing - ¼ yd. of 22" to 36" woven non-woven

<b>Finished back length of shirt:</b>							
<b>V. 1 or 2</b>	25½	25¾	26	26¼	26½	26¾	Ins
<b>V. 3</b>	23	23¼	23½	23¾	24	24¼	"

**Notions:** Thread. V. 1: Nine ½" buttons, 1" buckle with prong. V. 2: Nine ½" buttons  
V. 3: Seven ½" buttons.

- 1 Fabric: width ..... Amount .....
- 2 Button: Size ..... Amount .....
- 3 Interfacing ..... [5]

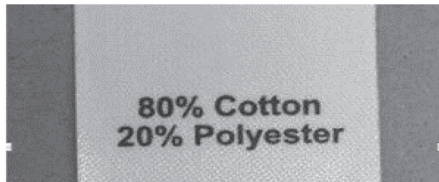
(d) Draw **four** pattern markings in the correct position on the pants pattern below:



[4]

(e) Explain the purpose of each clothing label shown below.

(i)



.....  
..... [2]

(ii)



.....  
..... [2]

(f) Define the following terms:

(i) "one-way design"

.....  
..... [1]

(ii) "with nap" fabrics

.....  
..... [1]

(g) Draw and interpret the correct care symbol for ironing a cotton seersucker fabric in the space below.

[2]

(h) Suggest **two** methods of finishing the raw top edge of a patch pocket.

1 .....  
2 ..... [2]

(i) (i) Identify **two** stages of textile production to which colour can be added to textiles.

1 .....  
2 ..... [2]

(ii) Suggest **two** methods used to colour fabric.

1 .....  
2 ..... [2]

(iii) Explain **one** reason for using synthetic/chemical dyes instead of natural dyes in textile production.

.....  
.....  
..... [2]

**(j)** Explain the importance of the following techniques in garment construction.

**(i)** Under stitching

.....  
.....  
..... [4]

**(ii)** Neatening seams

.....  
.....  
..... [2]

**(k)** Describe how to transfer pattern markings using tailor's tacking. A diagram may be used to illustrate the answer.

.....  
.....  
.....  
.....  
.....  
.....  
.....  
.....  
.....  
.....  
..... [4]

**Total Marks [40]**

**SECTION B**

Answer any **two** questions in this section in the spaces provided.

2 (a) Identify the group of fibres to which polyester belongs.

..... [1]

(b) State **one** use for each of the following decorative stitches

(i) Blanket

..... [1]

(ii) Satin

..... [1]

(c) Explain, using a labelled diagram, how a plain weave fabric is constructed.

[4]

(d) Give a reason why pressing is important in the following stages of garment construction:

(i) Seams

.....  
.....  
..... [1]

(ii) When applying fusible interfacing to the neckline facing.

.....  
.....  
..... [1]

(iii) Darts

.....  
.....  
..... [1]

**(e)** Describe how to carry out the following processes using a sewing machine

**(i)** Sew a zig-zag stitch

.....

.....

.....

.....

.....

..... [2]

**(ii)** Sew machine worked buttonholes

.....

.....

.....

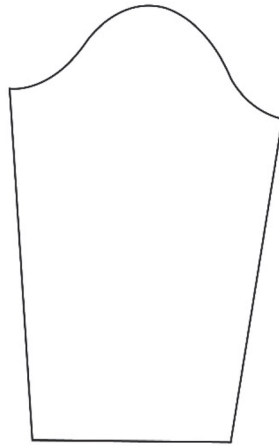
.....

.....

..... [2]



- (f) Explain, with the aid of labelled diagrams, how to shorten, by 2 cm, the sleeve.





..... [6]

**Total Marks [20]**

3 (a) Identify any **two** hand stitches used when sewing a hem.

.....  
..... [2]

(b) Complete the table by identifying each pattern marking and stating **one** reason for using each on a pattern.

Pattern Marking	Name of Pattern Marking	Reason for use
	  	  
	  	  

[4]

(c) Describe **two** fabric finishes to improve the performance of cotton and linen.

(i) .....  
.....  
..... [2]

(ii) .....  
.....  
..... [2]

(d) Discuss **two** benefits of using thermoplastic fabrics for a pleated skirt.

(i) .....  
.....  
..... [2]

(ii) .....  
.....  
..... [2]

(e) Explain, using notes and labelled diagrams, how to sew a plain open seam on poplin fabric.

.....

.....

.....

.....

.....

.....

.....

.....

.....

.....

.....

.....

.....

.....

.....

.....

.....

.....

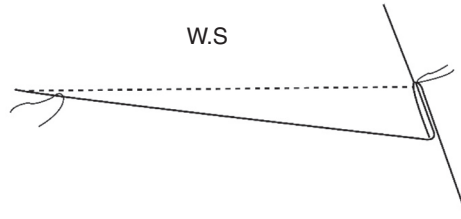
.....

.....

..... [6]

**Total Marks [20]**

4 (a) (i) Identify the dart shown below.



..... [1]

(ii) Name **two** positions where this dart can be sewn on the bodice.

.....  
..... [2]

(b) Explain how to remove a perspiration stain on a white cotton shirt.

.....  
.....  
.....  
..... [3]

(c) List **two** types of fasteners commonly applied on a faced neckline opening.

.....  
..... [2]

(d) Explain how the following stitches are used to embellish garments.

(i) Stem stitch ..... [1]

(ii) Cross stitch ..... [1]

(e) Discuss any **two** social factors that have influenced changes in fashion styles.

.....  
.....  
.....  
.....  
..... [4]



**SECTION C**

Answer either questions 5 or 6

Write your answer in the spaces provided

- 5 Discuss the reasons why cotton is blended with other fibres. Give examples of cotton blended fabrics to support your answer.

[20]

**OR**

- 6 Discuss the advantages and disadvantages of buying ready-made clothes instead of making your own.

[20]

.....

.....

.....

.....

.....

.....

.....

.....

.....

.....

.....

.....

.....

.....

.....

.....

.....

.....

.....

.....

.....

.....

.....

Dotted lines for writing.

Dotted lines for writing

Permission to reproduce items where third-party owned material protected by copyright is included has been sought and cleared where possible. Every reasonable effort has been made by the publisher (ECESWA) to trace copyright holders, but if any items requiring clearance have unwittingly been included, the publisher will be pleased to make amends at the earliest possible opportunity.